

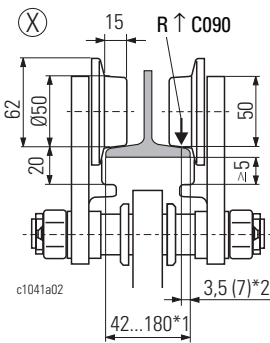


ST 10

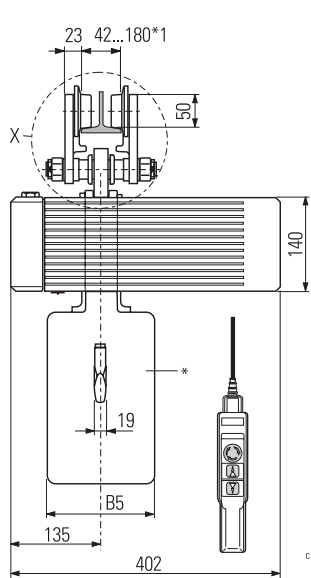
Rollfahwerk **Push trolley** **Chariot de direction par poussée**

1/1

US-G 10						*		
	HW	B3	B4	B5	B6			B7
	[m]	[mm]						
12	529	352	160	160	559	K	Standard	
25	616	347	150	155	646	T		
30	696	347	150	155	726	T		
50	706	347	320	155	716	T		
60	746	347	320	155	766	S		
12	516	347	150	155	546	S	Option	
25	616	347	150	155	646	S		
30	696	347	150	155	726	S		



Auswahltabelle: ↑ 14



Selection table: ↑ 14

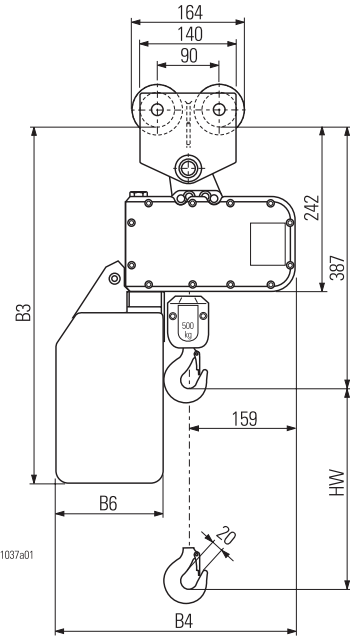
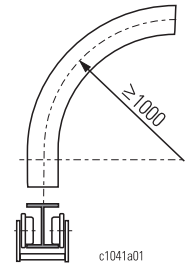
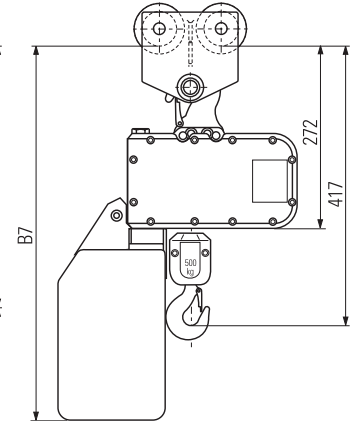


Tableau de sélection : ↑ 14

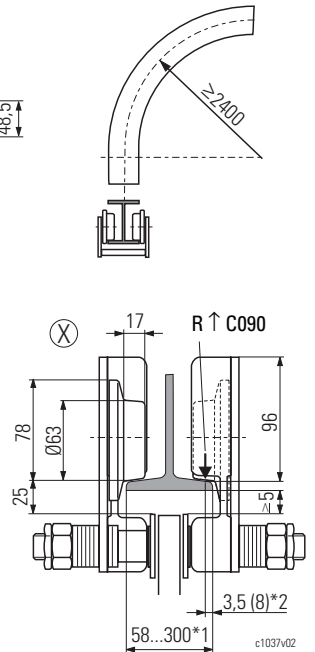
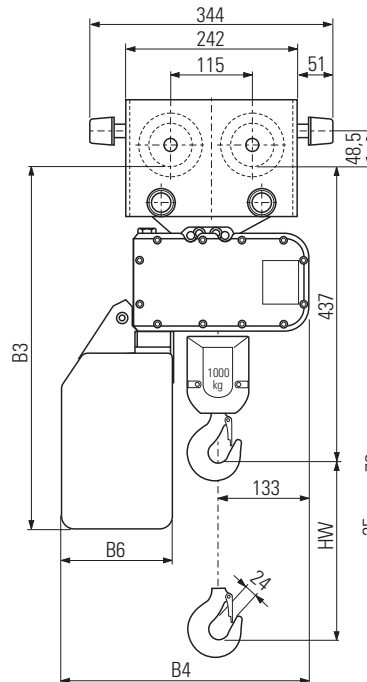
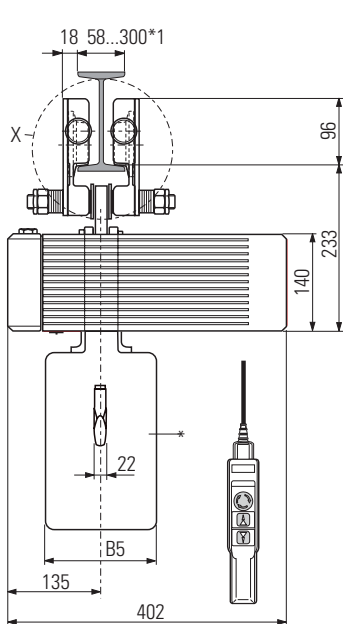
Hakenaufhängung
 Hook suspension
 Suspension par crochet



Rollfahwerk mit starrer Befestigung siehe A191 oder Seite 24.
 Push trolley with rigid connection see A191 or page 24.
 Chariot de direction par poussée à suspension rigide voir A191 ou page 24.

2/1

KFN 10.10H					*		
	HW	B3	B4	B5			B6
	[m]	[mm]					
6	519	352	160	160	K	Standard	
12,5	606	347	150	155	T		
15	686	347	150	155	T		
25	696	347	320	155	T		
30	736	347	320	155	S		
6	506	347	150	155	S	Option	
12,5	606	347	150	155	S		
15	686	347	150	155	S		



* Material des Kettenspeichers
 K = Kunststoff
 S = Stahlblech
 T = Textil
 *1 Standard
 *2 Bei geneigtem Flansch

* Material of chain box
 K = Plastic
 S = Sheet metal
 T = Fabric
 *1 Standard
 *2 With sloping flange

* Matériau du bac à chaîne
 K = Matière plastique
 S = Tôle d'acier
 T = Textile
 *1 Standard
 *2 Avec bride inclinée