



ST 20

Kettenzug "stationär"

"Stationary" chain hoist

Palan à chaîne "fixe accroché"

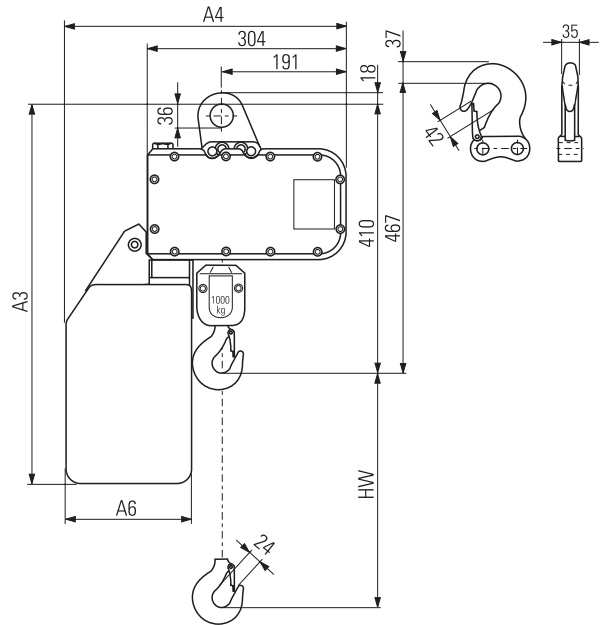
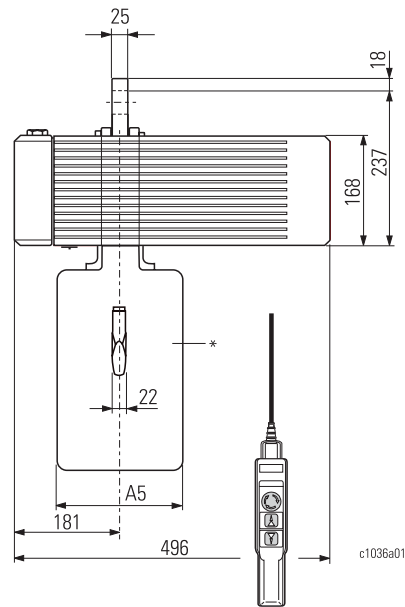
1/1

HW [m]	A3	A4	A5	A6	K T S	*
	[mm]					
8	532	398	160	160	K	Standard
16	619	393	150	155	T	
22	699	393	150	155	T	
30	709	393	320	155	T	Option
40	749	393	320	155	S	
8	519	393	150	155	S	
16	619	393	150	155	S	
22	699	393	150	155	S	

Auswahltabelle: ↑ 14

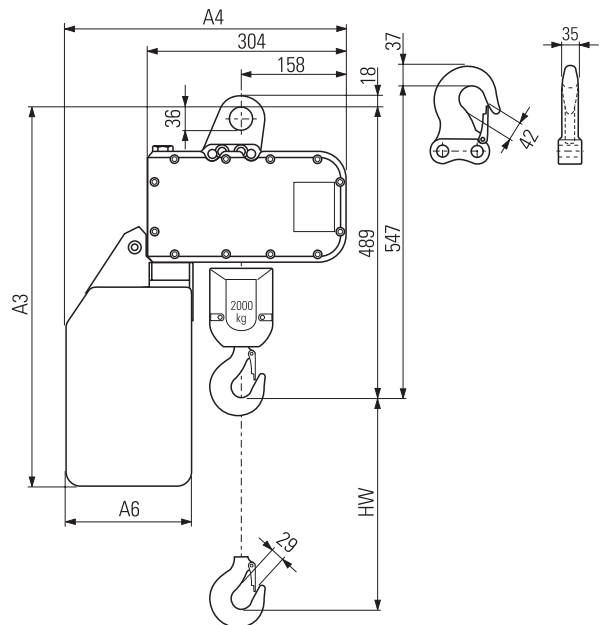
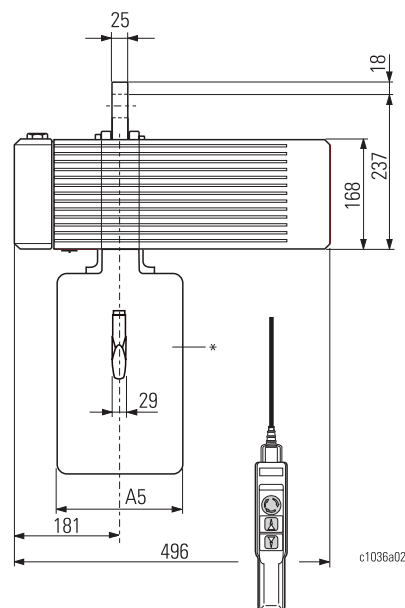
Selection table: ↑ 14

Tableau de sélection : ↑ 14



2/1

HW [m]	A3	A4	A5	A6	K T S	*
	[mm]					
4	532	398	160	160	K	Standard
8	619	393	150	155	T	
11	699	393	150	155	T	
15	709	393	320	155	T	
20	749	393	320	155	S	
4	519	393	150	155	S	Option
8	619	393	150	155	S	
11	699	393	150	155	S	



* Material des Kettenspeichers
K = Kunststoff
S = Stahlblech
T = Textil

* Material of chain box
K = Plastic
S = Sheet metal
T = Fabric

* Matériau du bac à chaîne
K = Matière plastique
S = Tôle d'acier
T = Textile